



**MHHS  
PROGRAMME**  
Industry-led, Elexon facilitated

---

# Migration plan summary

## Sprint 0

A summary of the outcomes from the Sprint 0 planning phase.

---

Version 1.0

MHHS-DEL4271

Document Classification: Public

The Sprint 0 planning cycle took place between 1 and 8 October 2025. The scope of the planning cycle included Sprint 0 planning at daily granularity and updating the migration plans for all remaining sprints to M15, at weekly granularity.

### Migration Plan Summary

Excluding Participants/MPIDS not qualifying for MHHS and collectively account for approximately 65,000 MPANs, the MCC has received and validated migration plans from all active Suppliers.

This submission reflects a continued improvement in MPAN coverage across the industry:

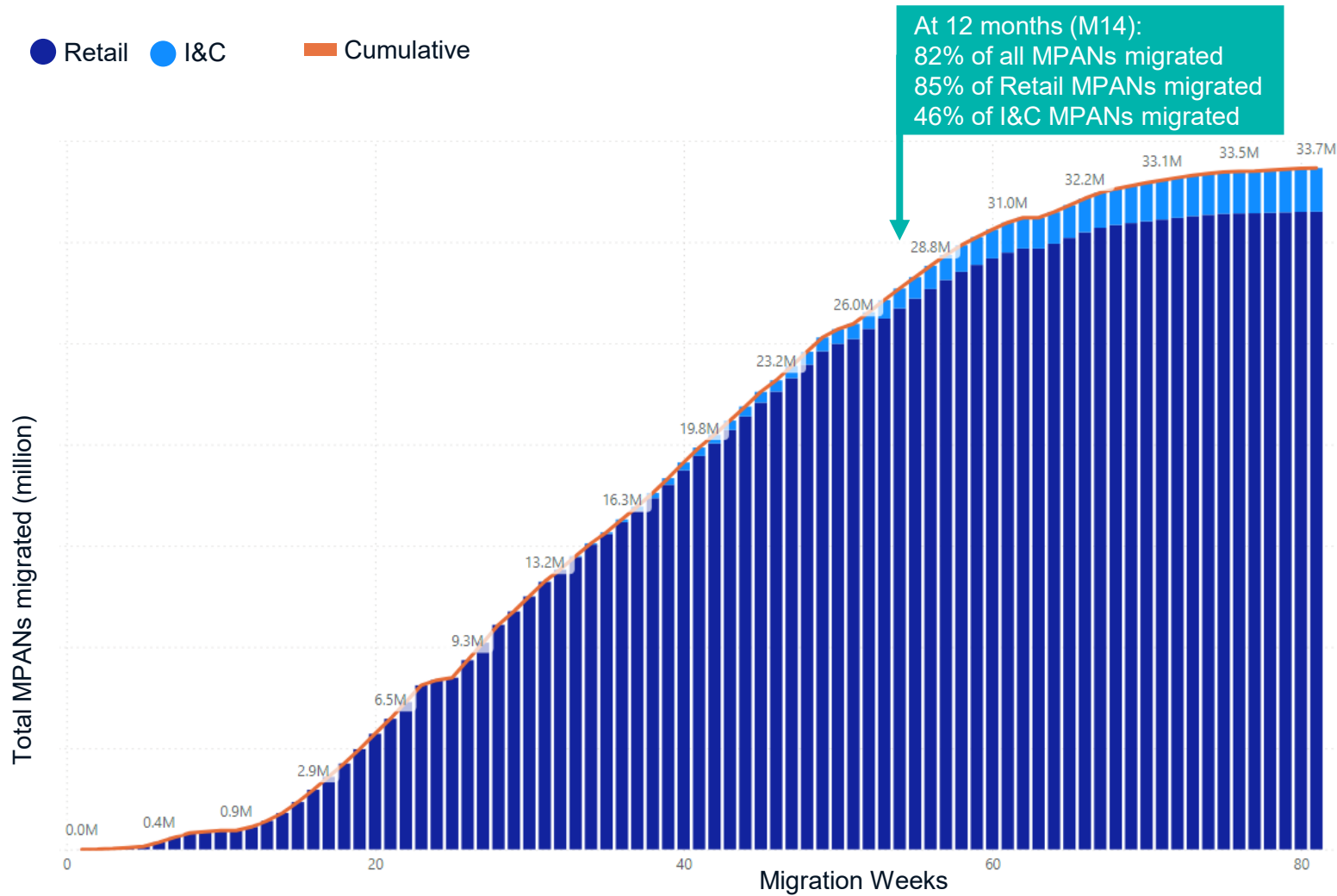
- First Submission (Oct 2024): 98.6%
- Second Submission (June 2025): 99.4%
- Current Submission (Oct 2025): 99.8%

### Key Highlights

- Migration plans now cover 99.8% of all industry MPANs. The remaining 65,000 MPANs are associated with Participants/MPIDS not qualifying for MHHS
- Daily migration schedules for Sprint 0 have been confirmed with all relevant participants and are aligned with ELS criteria
- All migration plans adhere to the M15 timeline, with aggregate volumes remaining within Central Party and LDSO thresholds
- No material changes were identified in the aggregated Migration Profile, and projections at the M14 milestone indicate that approximately 82% of MPANs are scheduled to migrate by the end of the first year of migration (30 Oct 2026), which is a 1% increase on the Submission 2 Migration plan which was baselined in July 2025
- A slight right-shift in Sprint 0 suppliers has been observed, driven by agent qualification timelines. This shift is considered immaterial to both ELS volumes and the impact on M15. However, it reinforces the importance of agent readiness and a clear understanding of agent–supplier contractual arrangements. In response, MCC has been engaging with the PPC and Qualification teams to address these areas
- Participants/MPIDs not qualifying for MHHS will be monitored, with the intention of accounting for their MPANs in future submissions once their status and circumstances are better understood

Chart 1 - Cumulative volume of Migrations from M11 to M15

The chart below illustrates the cumulative volume of Retail and Industrial & Commercial (I&C) MPANs migrated per week.

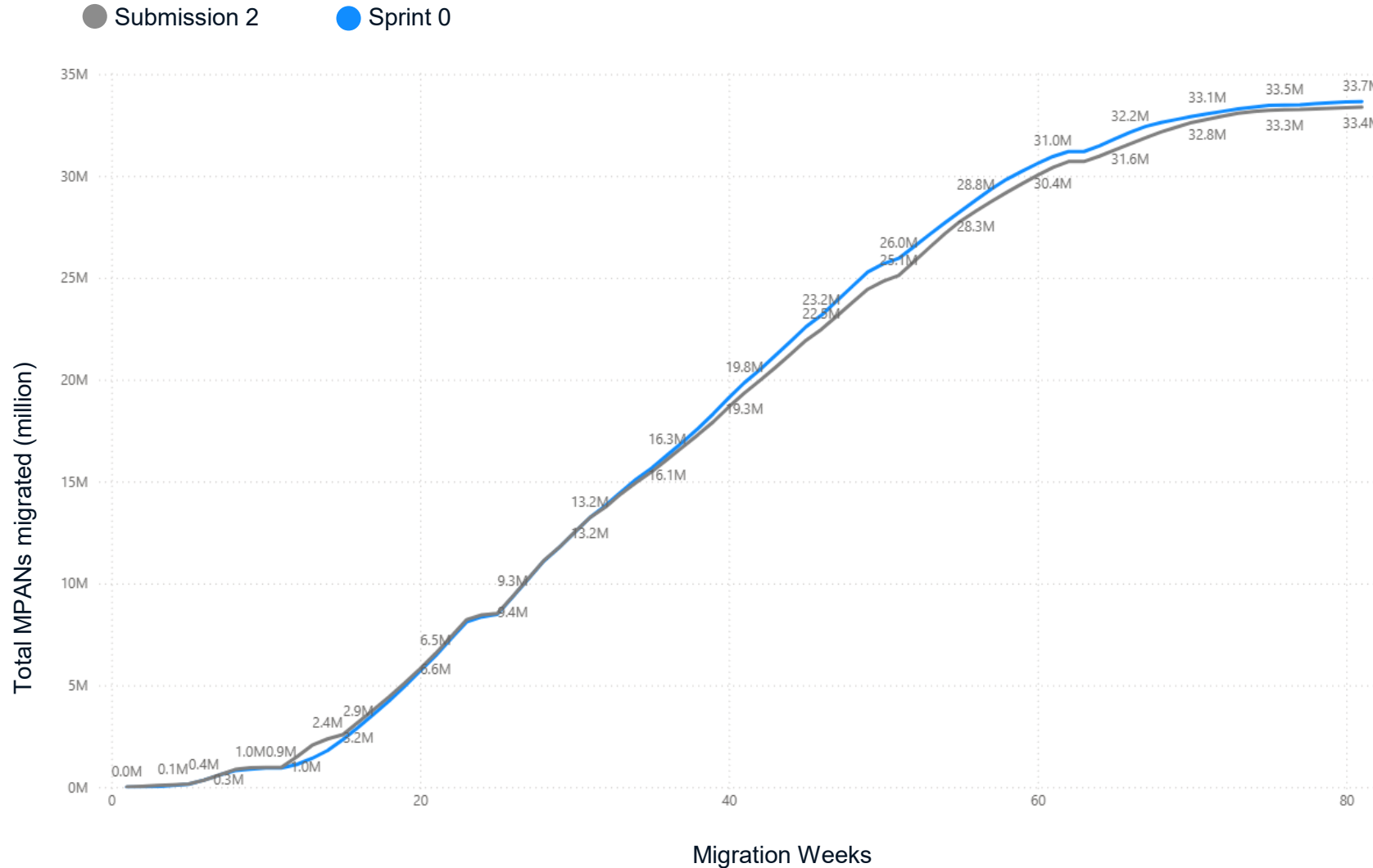


Commentary:

- Compared to Submission 2, the migration profile outlined during Sprint 0 planning shows a slight leftward shift. In Submission 2, 81% of migrations were scheduled by Week 54, while the Sprint 0 version reflects an increase to 82%.
- The bulk of I&C migrations occur in the 2<sup>nd</sup> half of the Migration phase

Chart 2 – Comparison of Cumulative volume of Migrations from M11 to M15

The chart below compares the Submission 2 and Sprint 0 profiles of the cumulative volume of Retail and I&C MPANs migrated per week.

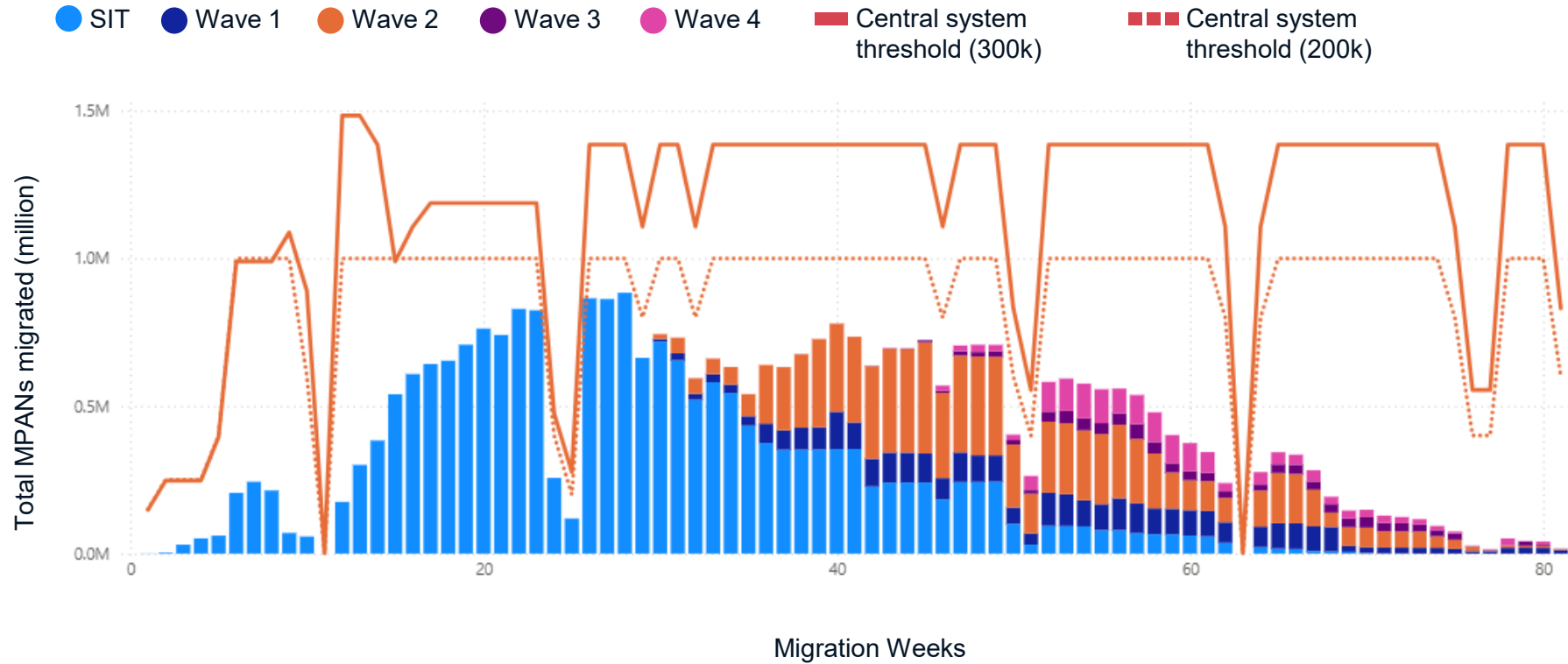


**Commentary:**

- The migration profiles are broadly similar overall.
- Submission 2 included a higher planned volume during the ELS period; however, these volumes were reduced in the Sprint 0 planning to align with ELS criteria.
- The Sprint 0 profile allocates more migrations to the middle phase of the migration period

Chart 3: Total migrations per week, by wave

The chart below illustrates:  
 The aggregated migration volumes per week from M11 – M15  
 The segmentation of migration volumes by Qualification wave  
 The adherence to the Central System thresholds

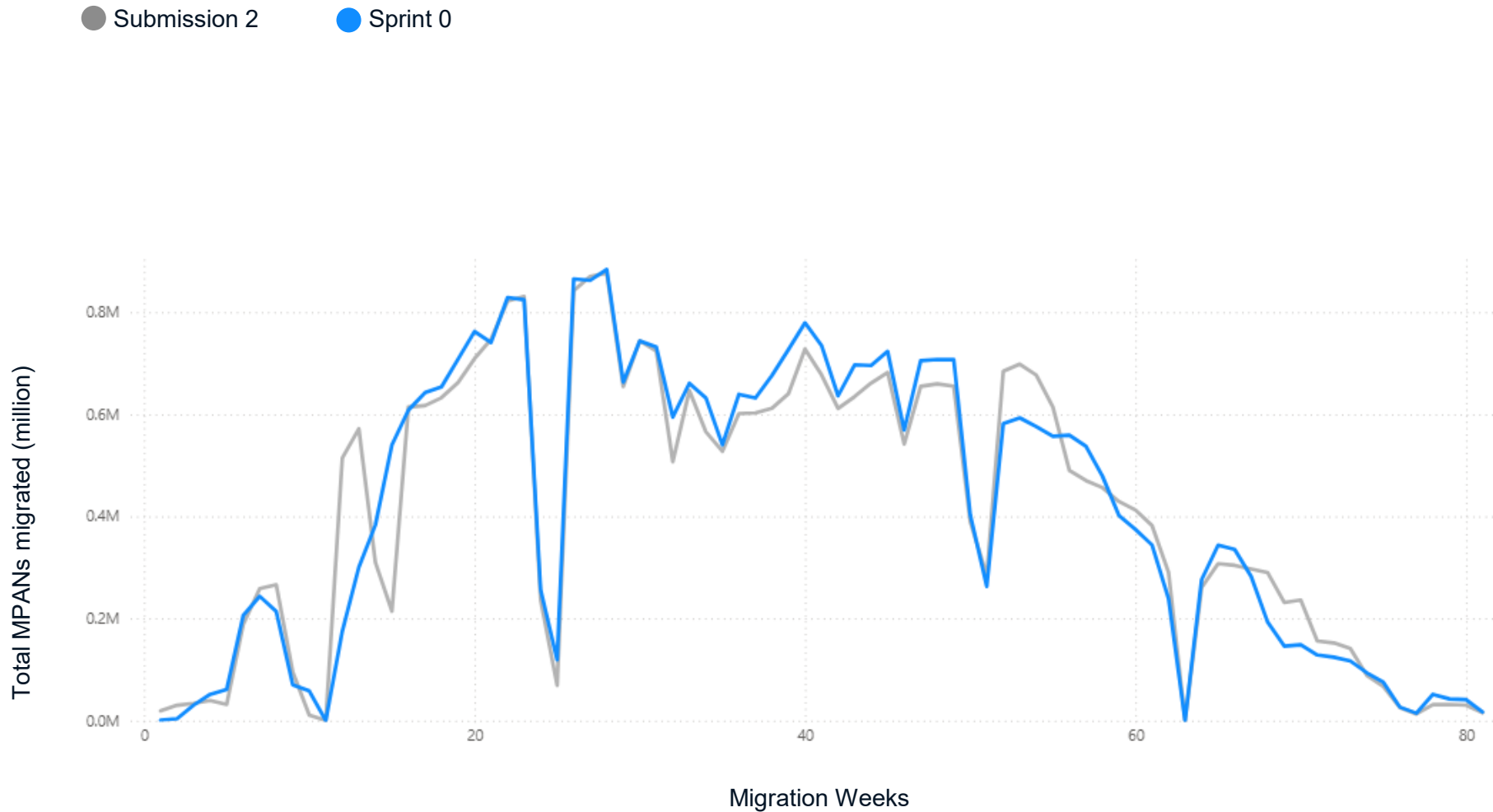


**Commentary:**

- Wave 2 includes a substantially higher number of MPANs compared to Wave 1; however, both waves are scheduled to begin migration concurrently.
- The peak period of migration activity is anticipated between March and July 2026. During this time, SIT Participants are expected to operate at peak capacity, while Non-SIT Participants will also commence their migrations.
- Aggregate migration volumes remain within the 200,000 MPAN daily threshold set for Central Systems, and at no point are capacity envelopes fully utilised.
- Temporary reductions in migration volumes and available capacity are attributed to planned non-migration periods, such as Christmas, bank holidays, and contract rounds.

Chart 4: Comparison of total migrations per week, by wave

The chart below compares the Submission 2 and Sprint 0 profiles of the aggregated migration volumes per week.



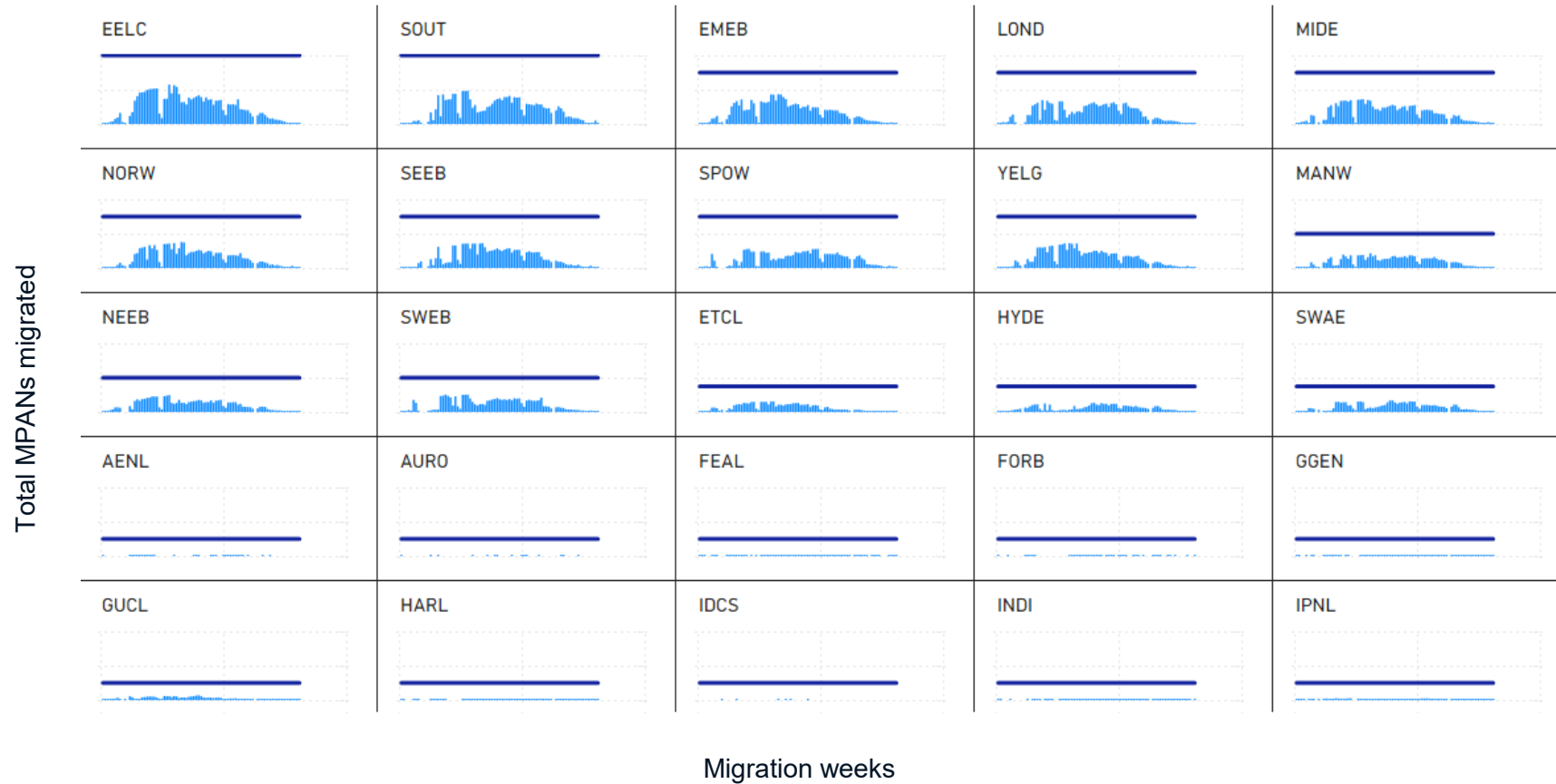
**Commentary:**

- The migration profiles are broadly similar overall.
- Submission 2 included a higher planned volume during the ELS period; however, these volumes were reduced in the Sprint 0 planning to align with ELS criteria.
- The Sprint 0 profile allocates more migrations to the middle phase of the migration period

# Chart 5: Compliance with LDSO thresholds

The chart below illustrates:  
 The aggregated migration volumes of all Suppliers per LDSO  
 The adherence to the LDSO system thresholds

● Weekly migrations ■ LDSO system threshold



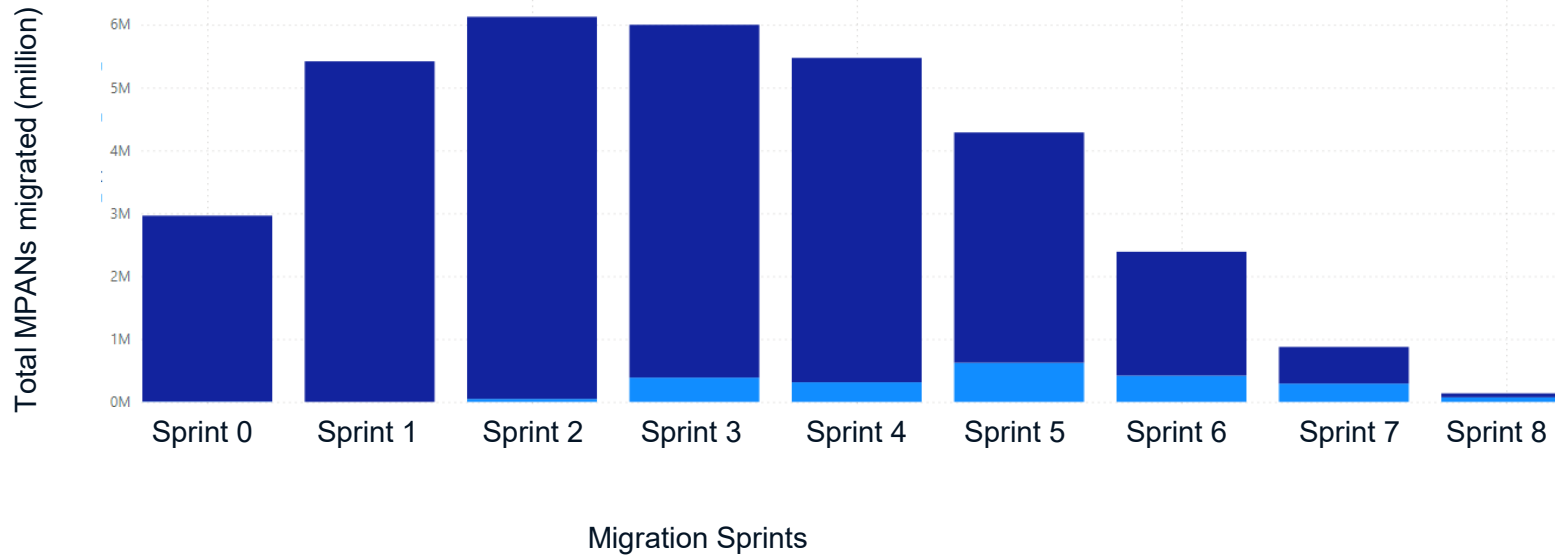
**Commentary:**

- Aggregate migration volumes remain within all defined LDSO system thresholds.

Chart 6: Total migrations per sprint

The chart below illustrates:  
The aggregated migration volumes per Migration Sprint  
The segmentation of migration volumes by Retail / I&C

● Retail ● I&C

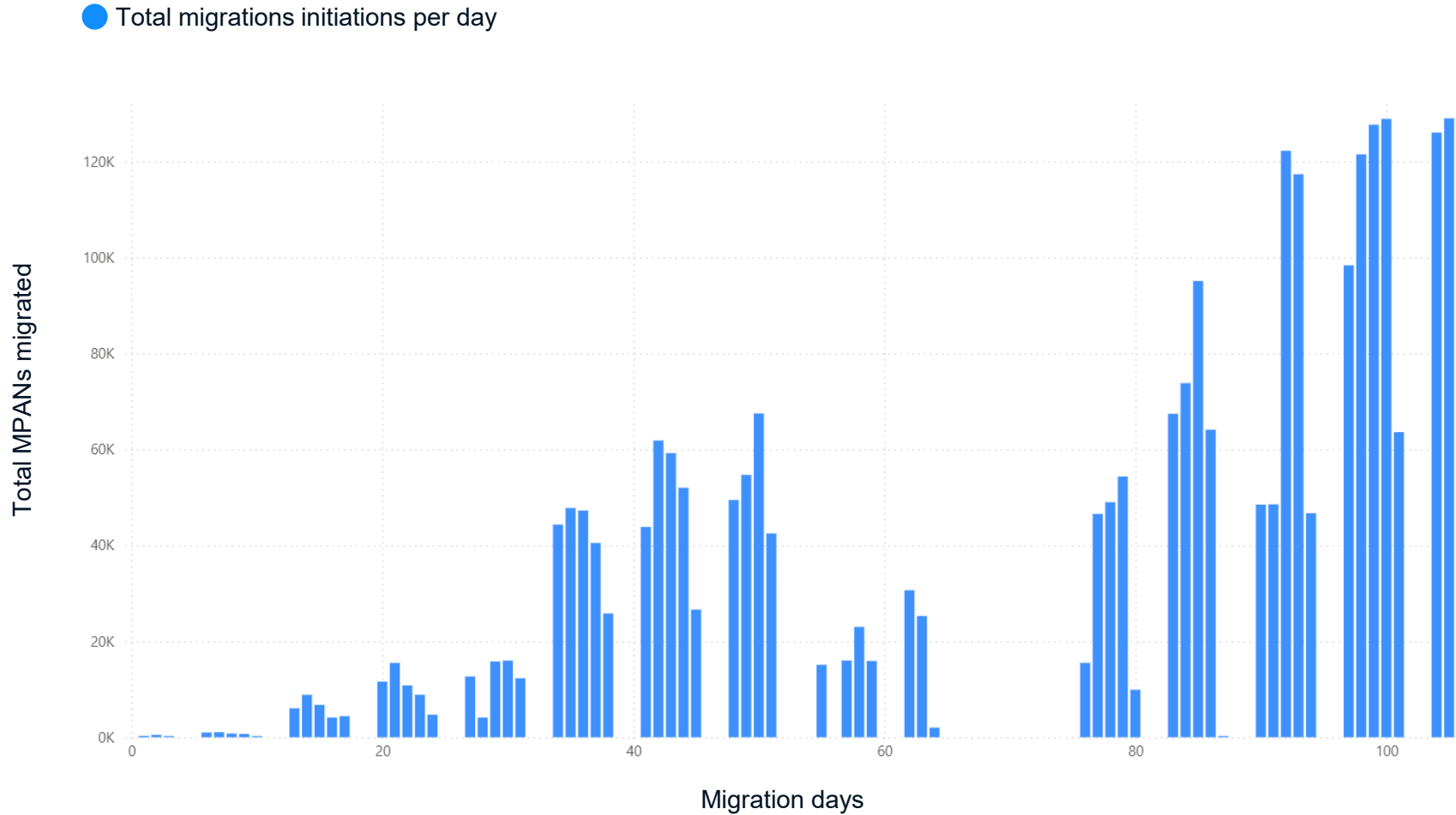


Commentary:

- From Sprint 3 onwards, there is a notable increase in I&C migration volumes.
- Non-SIT migrations commence toward the end of Sprint 2, marking the beginning of their migration activity.
- Sprint dates are provided in Appendix 1.

Chart 7: Total daily migration initiations in Sprint 0

The chart below illustrates the aggregated migration initiations per day for Sprint 0



**Commentary:**

- This chart outlines the daily planned migration initiations for Sprint 0
- The forecasted volumes are consistent with the ELS criteria
- "Peak of peak" tests are scheduled for migration completion as follows (subject to Sprint 0 progressing as planned):
  - 50,000 completions – 18 November 2025
  - 200,000 completions – 16 December 2025
  - 300,000 completions – 20 January 2026

## Appendix 1 – Sprint cycle dates

Sprint Cycle	Date of the EES Data Cut	Plan Start Date	Issue Envelope Date	Supplier Plan Submission Deadline	Baseline Schedule Publication Date	Sprint Execution		Retro Start Date	Retro End Date
						Execution Start Date	Execution End Date		
0	Fri 29/08/25	Wed 24/09/25	Wed 01/10/25	Wed 08/10/2025	Wed 15/10/25	Wed 22/10/25	Tue 03/02/26	Wed 04/02/26	Tue 17/02/26
1	Wed 31/12/25	Wed 07/01/26	Wed 14/01/26	Wed 21/01/2026	Wed 28/01/26	Wed 04/02/26	Tue 31/03/26	Wed 01/04/26	Tue 14/04/26
2	Fri 27/02/26	Wed 04/03/26	Wed 11/03/26	Wed 18/03/2026	Wed 25/03/26	Wed 01/04/26	Tue 02/06/26	Wed 03/06/26	Tue 16/06/26
3	Thu 30/04/26	Wed 06/05/26	Wed 13/05/26	Wed 20/05/2026	Wed 27/05/26	Wed 03/06/26	Tue 04/08/26	Wed 05/08/26	Tue 18/08/26
4	Tue 30/06/26	Wed 08/07/26	Wed 15/07/26	Wed 22/07/2026	Wed 29/07/26	Wed 05/08/26	Tue 06/10/26	Wed 07/10/26	Tue 20/10/26
5	Mon 31/08/26	Wed 09/09/26	Wed 16/09/26	Wed 23/09/2026	Wed 30/09/26	Wed 07/10/26	Tue 01/12/26	Wed 02/12/26	Tue 15/12/26
6	Fri 30/10/26	Wed 04/11/26	Wed 11/11/26	Wed 18/11/2026	Wed 25/11/26	Wed 02/12/26	Tue 02/02/27	Wed 03/02/27	Tue 16/02/27
7	Thu 31/12/26	Wed 06/01/27	Wed 13/01/27	Wed 20/01/2027	Wed 27/01/27	Wed 03/02/27	Tue 06/04/27	Wed 07/04/27	Tue 20/04/27
8	Fri 26/02/27	Wed 10/03/27	Wed 17/03/27	Wed 24/03/2027	Wed 31/03/27	Wed 07/04/27	Thu 06/05/27	Fri 07/05/27	Thu 20/05/27



**MHHS  
PROGRAMME**  
Industry-led, Elexon facilitated

---

# End of report

---